

TROMBONE 1

UN GRAN DÍA EN EL BARRIO

SALSA - SPANISH HARLEM ORCHESTRA

INTRO



VERSE 1



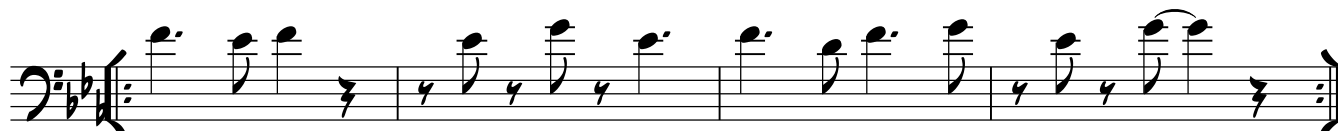
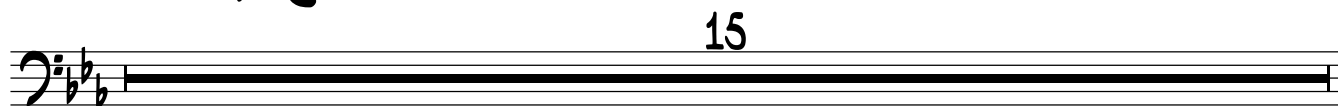
INTERLUDIO



CHORUS/BRIDGE



INTERLUDE**MONTUNO 1 (AD LIB)****(PICKUP TO MAMBO W/3)****MAMBO (ON CUE)**

MONTUNO 2 (AD LIB)**MOÑA (ON CUE)****MONTUNO 3 (AD LIB)****DESCARGA (ON CUE)****MONTUNO 4 (AD LIB)****CODA (ON CUE)**