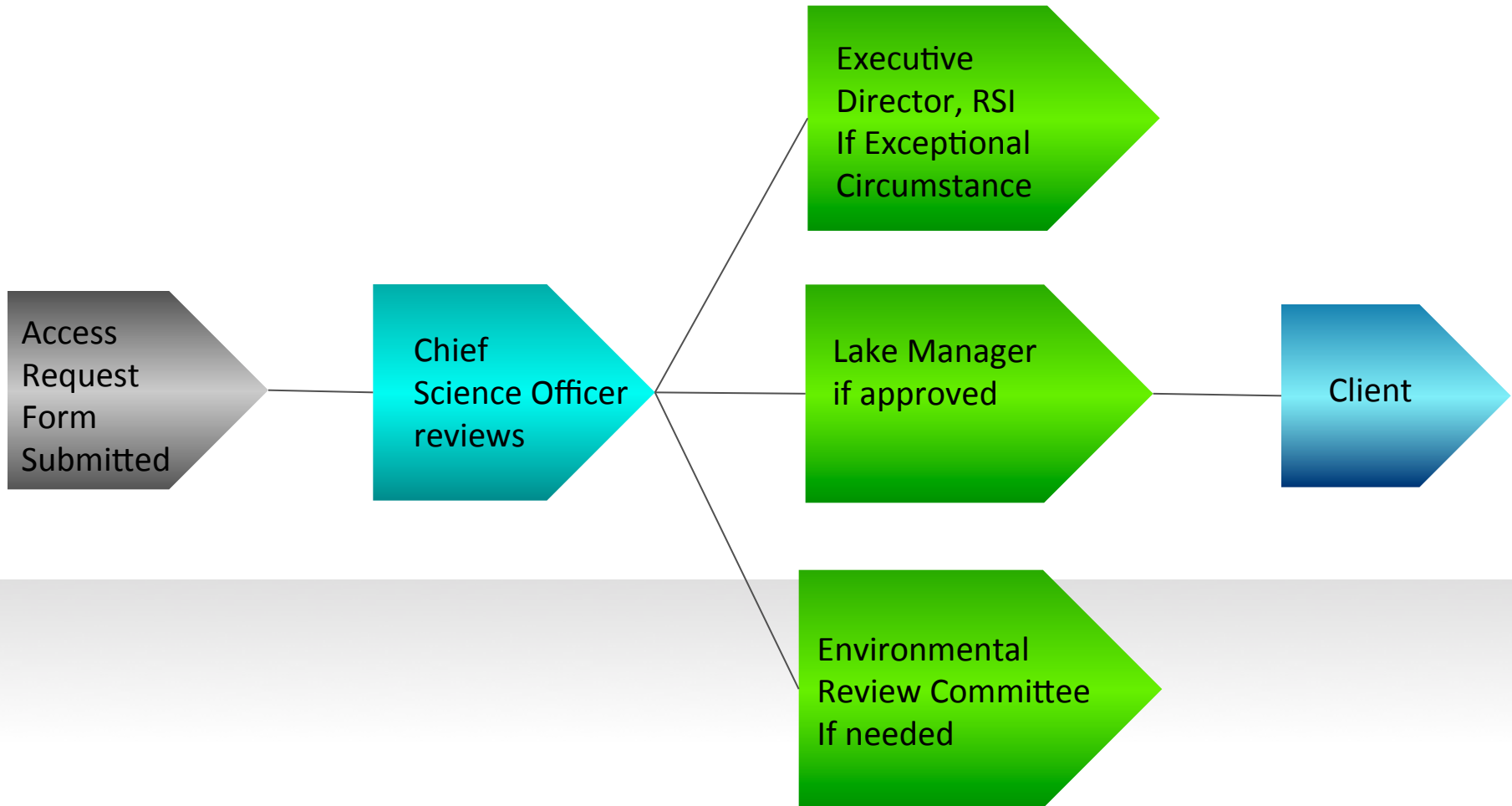


Procedure for Spring Lake Access



Submitted form goes directly to the Chief Science Officer. Approved requests go to the Lake Manager who will contact the client to determine details and support services required. If request is an exceptional circumstance the request will be sent to the Executive Director of the River Systems Institute who will meet with Spring Lake Coordinating Committee to determine impacts upon Spring Lake. If request is denied the client will be given an explanation of why and suggested resolution.