

HOW TO FIND THE DATA YOU NEED

JOE MEYER & MARC TURNER
INSTITUTIONAL RESEARCH
TEXAS STATE UNIVERSITY

INSTITUTIONAL RESEARCH

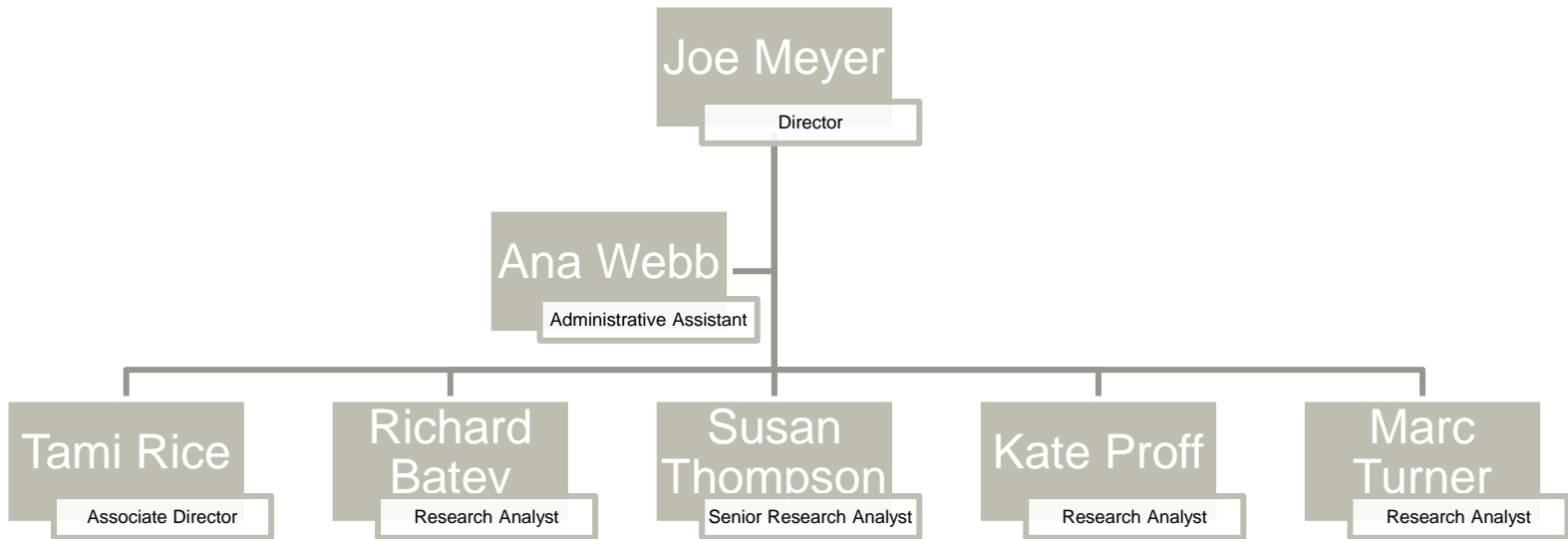
Mission:

The Office of Institutional Research serves the Texas State University community by providing data and information to advance the university mission and support administrative decision-making.

In order to accomplish our mission, the office of Institutional Research sets forth the following objectives:

- Effectively collect, analyze, and disseminate data for regular and ad hoc requests;
- Submit state and federally mandated reports;
- Ensure the accuracy of and integrity of university data and reports;
- Provide assessment and planning assistance to administrative departments.

INSTITUTIONAL RESEARCH



MAIN TOPICS

- **Texas State University data**
- **Texas Higher Education Coordinating Board data**
- **U.S. Department of Education data**
- **Other helpful sources:**
 - College Results Online
 - NCHEMS Information Center
 - Bureau of Labor and Statistics
 - Census Bureau
 - Various Salary databases

TEXAS STATE DATA

**There are two kinds of statistics:
The kind you look up and the kind you make up**
Rex Stout (1886-1975)

INSTITUTIONAL RESEARCH FOR TEXAS STATE DATA

www.ir.txstate.edu

TEXAS STATE UNIVERSITY

Web Tools Search web/people

About Texas State Library Maps Round Rock

Institutional Effectiveness
Institutional Research

J C Kellam 883
601 University Drive
San Marcos, TX 78666
Ph: (512) 245.2386
Fax: (512) 245.8446

IE Offices About Us IR Self-Service Reports & Projects Survey Services Resources Site Map

adjust type size | - | + | reset |
Texas State > Institutional Effectiveness > Institutional Research

IR Quick Links
Facts & Highlights
Self-Service Pivot Tables
Administrative Surveys & Services
Common Data Set
Project Requests
Texas Higher Education
Accountability System
IR Site Map

Texas State Links
Academic Calendar
Enrollment Management

Welcome to the Office of Institutional Research.
Our primary function is to provide members of the University administration, as well as State and Federal officials, information including enrollment history, data for academic planning and assessment, information for state and federal reporting, and the results of various administrative surveys.
We invite you to make use of the information contained here to help improve management in all parts of the University. If you have any questions or feedback, please feel free to contact us.

Commonly Requested Information
The answers to many of the more commonly asked questions can be

News & Updates
05/20/2013 We are happy to welcome Mrs. Ana Webb as the new Administrative Assistant III to our office.
02/07/13 Grade Distribution tables have been updated with Summer and Fall 2012 data (NetID login required)
01/02/13 Institutional Research has added G. Marc Turner as the newest member of our staff. Welcome,

STANDARD REPORTS

Enrollment Report (from Enrollment Management & Marketing)

- <http://www.emm.txstate.edu/resources/enrollment-reports.html>

Board of Regents Fact Sheet

- <http://www.ir.txstate.edu/reports-projects/regents-fact-sheet.html>

Common Data Set

- <http://www.ir.txstate.edu/reports-projects/common-data-set.html>

Administrative Survey Results

- <http://www.ir.txstate.edu/survey-services/admin-survey-results.html>

FROM MANY SOURCES TO ONE

- **Online Fact Book**
- **Ad Hoc Reports**
- **Information Requests**

End result: MS Excel Pivot Tables

WHY PIVOT TABLES?

Key Advantages


- **User friendly**
- **Easy to update**
- **More flexible**
- **Tables and graphs**
- **Single version of the truth**
- **More information**


Texas State > Institutional Effectiveness > Institutional Research > IR Self-Service > Texas State University Data


Texas State University Data

Provided below are links to pivot tables containing information about Texas State University. The information is divided into two sections based on the nature of the data. Information in the first section is available to the general public. Information in the second section is restricted to University faculty and staff.

General Information

 [Student Enrollment : Enrollment Data \(CBM001\)](#) (XLSX, 16095.9 KB)
Updated on 10/15/2013 with preliminary Fall 2013 data

 [Course Enrollment : Enrollment Data \(CBM004\)](#) (XLSX, 7165.7 KB)
Updated 10/04/2013 with preliminary Fall 2013 data

 [Degrees Awarded : Degrees \(CBM009\)](#) (XLSX, 2144.7 KB)
Updated on 11/26/2012 with data through Summer 2012

Internal/Restricted Information

The following reports contain confidential/private information and are restricted to faculty and staff only. Login using your Texas State NetID.

- Class Enrollments and Grades
- Retention and Graduation Rates

USING THE PIVOT TABLES

If you have used spreadsheets, then navigating a pivot table is as easy as 1, 2, 3...

Enrollment by Fiscal Year at Texas State University-San Marcos

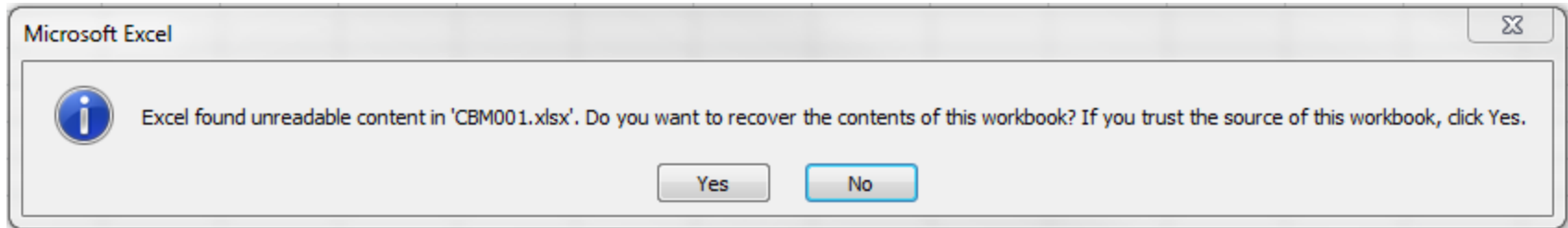
Department	(All)	▼		
Major	(All)	▼		
Major_Degree	(All)	▼		
Major_Concentration	(All)	▼		
Status	(All)	▼		
Ethnicity	(All)	▼		
Gender	(All)	▼		
Age_Group	(All)	▼		
Continent	(All)	▼		
Country	(All)	▼		
State	(All)	▼		
TX_Region	(All)	▼		
County	(All)	▼		
MSA	(All)	▼		
Level	(All)	▼		
Class	(All)	▼		
Admit_Category	(All)	▼		
TxSt_Semester	Fall	▼		
Sum of Headcount	TxSt_FYear			
College	2002	2003	2004	2005
Applied Arts	2,415	2,604	2,866	2,866
Business Administration	4,527	4,705	3,161	2,866
Education	4,024	4,561	4,998	5,000

1. This dimension contains filters for the entire report. Variables can be dragged into different table dimensions.

2. Drop boxes can be used to filter from within the row and column variables.

3. Right-click within the table to options such as sums, counts, and percentages.

ERRORS ON OPEN



Solution:

- **Clear your browser's cache**
 - **IE** – Tools > Internet Options > Browsing History > Click Delete > Check “Temporary Internet Files” > Click Delete
 - **Firefox** – Tools > Options > Advanced > Network > Click Clear Now in “Cached Web Content”
- **Increase cache space**
 - **IE** – Tools > Internet Options > Browsing History Settings > Set “Disk space to use” to at least 500.
 - **Firefox** – Tools > Options > Advanced > Network > Uncheck “Override automatic cache management”

COMPARING TEXAS STATE TO OTHER ENTITIES

**It is easy to lie with statistics,
but it is easier to lie without them**
Frederick Mosteller (1916-2006)

DIVERSITY IN STUDENTS

- **Texas**

- <http://www.collegeportraits.org/>
- http://www.txhighereddata.org/Interactive/PREP_New/
- <http://www.txhighereddata.org/Interactive/Accountability/>
- <http://www.tgslc.org/factsheets/schools/parameters.cfm>

- **National**

- <http://nces.ed.gov/ipeds/datacenter/>
- <http://www.higheredinfo.org/>

DIVERSITY IN POPULATION

- **Texas**

- <http://txsdc.utsa.edu/>
- <http://www.texasalmanac.com/>

- **National**

- <http://www.census.gov/>

DIVERSITY IN THE WORKFORCE

- **Texas**
 - <http://www.twc.state.tx.us/>
- **National**
 - <http://www.bls.gov/>

FACULTY SALARIES

- **Texas**

- <http://www.txhighereddata.org/index.cfm?objectId=275F4F21-911A-6892-5CFEDF68464ED2BB>

- **National**

- <http://www.aaup.org/>
- <http://chronicle.com/section/Facts-Figures/58/>
- <http://nces.ed.gov/ipeds/datacenter/>
- <http://www.cupahr.org/> (paid service)
 - <http://www.hr.txstate.edu/univpayplan/FacultyCompensation.html>

ADMINISTRATIVE STAFF SALARIES

- **Texas**

- <http://www.texastribune.org/library/data/government-employee-salaries/>

- **National**

- <http://chronicle.com/section/Facts-Figures/58/>

STAFF SALARIES

- **Texas**

- <http://www.texastribune.org/library/data/government-employee-salaries/>

- **National**

- <http://www.salary.com/>
- <http://www.bls.gov/>

RETENTION AND GRADUATION RATES

- **Texas State**

- <http://www.ir.txstate.edu/ir-self-service/txstate-data/restricted-txst-data.html>

- **Texas**

- <http://www.txhighereddata.org/Interactive/GradRates.cfm>

- **National**

- <http://www.collegeresults.org/>

QUESTIONS OR COMMENTS?

Thank you for attending!

- **Please fill out your evaluation.**
- **What other types of data would you like to see covered in this workshop?**