

Conversations with a Medical Examiner:

Autopsies & Other Testing

1

Welcome & Housekeeping

- **Dr. Keith Pinckard, Travis County Chief Medical Examiner**
- **Amber Myers, Staff Attorney, TJCTC**
- **Sarah McKinney, JP Program Administrator, TJCTC**

2

Today's Webinar



Introduction



Prepared Material



Questions?

3

Dr. Keith Pinckard

Travis County Chief Medical Examiner

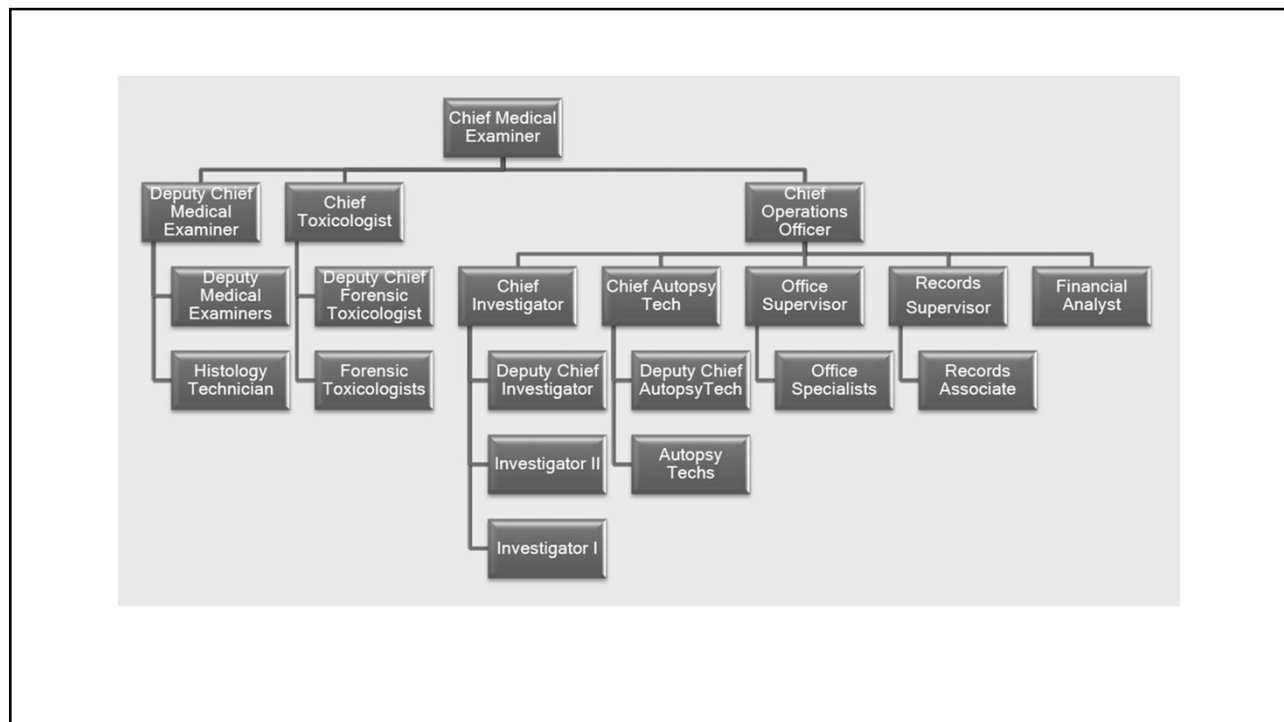
4

Can you explain a bit more about your facility?

5

We often just think about the Medical Examiners, but what other staff works at your office?

6



7

What kind of new equipment or software to help determine cause and manner of death does your team have access to?

8

Notes for X-Ray photos

9

What services can your
office provide to JPs
conducting inquests?

10

•Autopsy

- - Postmortem computed tomography scanning
- - External and Internal exam
- - All necessary testing, including toxicology
- - Report with opinion of cause and manner of death

11

•External Examination

-
- - Postmortem computed tomography scanning
- - External exam only (the body is not opened)
- - Toxicology testing not performed (except MVAs)
- - Report with opinion of cause and manner of death

- **ONLY APPROPRIATE FOR CERTAIN TYPES OF CASES**

12

- Chart Review with Medical Opinion
 - - The body is NOT transported to TCME
 - - Review of circumstances and medical records
 - - Report with opinion of cause and manner of death
- ONLY APPROPRIATE FOR CERTAIN TYPES OF CASES

13

What is the most common question you get asked by JPs?

14

Cause and Manner of Death Resources

- Cause of Death Reference Guide (smartphone app)
 - By Centers for Disease Control and Prevention
<https://www.cdc.gov/nchs/nvss/mobile-app.htm>

15

Cause and Manner of Death Resources

- National Center for Health Statistics Training on Writing Cause-of-Death Statements & other CDC Resources:
https://www.cdc.gov/nchs/nvss/writing_cod_statements.htm
- National Center for Health Statistics Guidance on Certifying COVID-19 Deaths:
<https://www.cdc.gov/nchs/data/nvss/vsrg/vsrg03-508.pdf>
- CDC “blue sheets” (natural deaths):
https://www.dshs.texas.gov/uploadedFiles/Content/Chief_Operating_Officer/vs/field/TxEVER/blue_form.pdf
- CDC “red sheets” (unnatural deaths):
https://www.cdc.gov/nchs/data/dvs/red_form.pdf

16

Updated Inquests Deskbook (2nd Ed.)

<https://www.tjctc.org/tjctc-resources/Deskbooks.html>

Cause and Manner of Death is discussed in Chapter 5 – pages 21-28

- *On page 22 you will find a table of resources with links to help you in filling out death certificates*

17

Contact Dr. Pinckard

- **Travis County Medical Examiner's Office**
- <https://www.traviscountytexas.gov/medical-examiner>
- 7723 Springdale Road
Austin TX 78724
Phone: (512) 854-9599
Fax: (512) 854-9044
- email: Keith.Pinckard@traviscountytexas.gov

18

Looking for more webinars on inquests?

- Join us on November 9th from 2-3pm when we welcome Dr. Janice Diaz-Cavalliery, El Paso County Deputy Medical Examiner.
- Visit our inquest month website for MORE dates with medical examiners from around the state.
- <https://www.tjctc.org/inquestmonth.html>