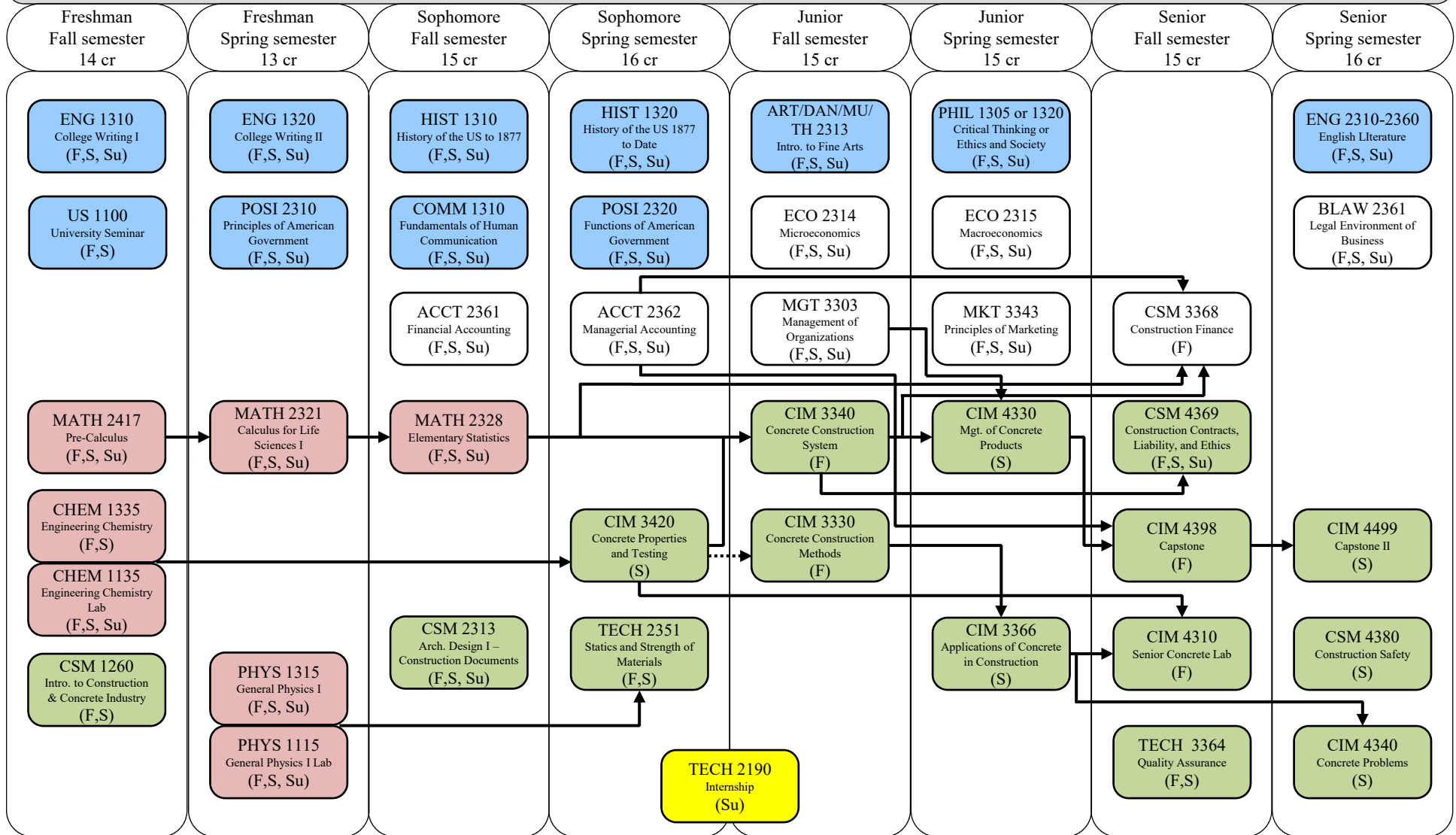


# BS – Concrete Industry Management

(SC-BS/CIM/BUS)

2020 Catalog year

College of Science and Engineering



This is not an official degree audit and it is subject to change. This chart is intended to be used by students who start out at Texas State. Please contact the College of Science and Engineering Undergraduate Advising Center for advising.

**Note:** In addition to major courses, students must also complete all core and minor requirements (if applicable) and any other requirements for graduation.

**KEY:**

Arrows indicate prerequisites.

Arrows with dashed lines indicate co-requisites.

Courses taught in specific semesters are indicated with the following codes:

F-Fall

Su-Summer Session I or II

S-Spring

Required WI courses: TECH 4380, CSM 4368, CSM 4369, CIM 4398