

Answer Key

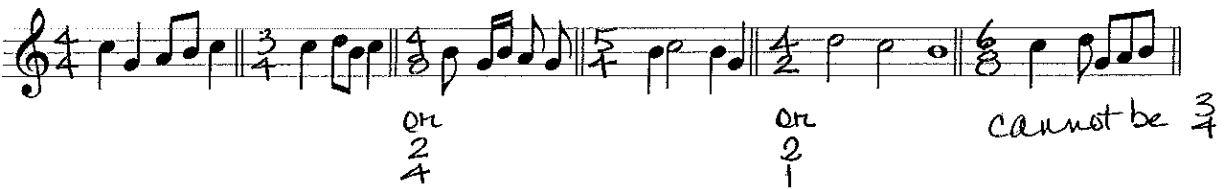
This is a practice version of the Theory Entrance Exam that all first-year music majors take at 8 am on the first day of classes. Print it out and complete in pencil. Allow no more than 45 minutes to finish both pages. Then compare to the answer key. Students who score 70 above enroll in Aural & Theory I (MU 1210-1211).

Music Theory PRACTICE ENTRANCE Test A (to enroll in Theory 1 & Aural 1)

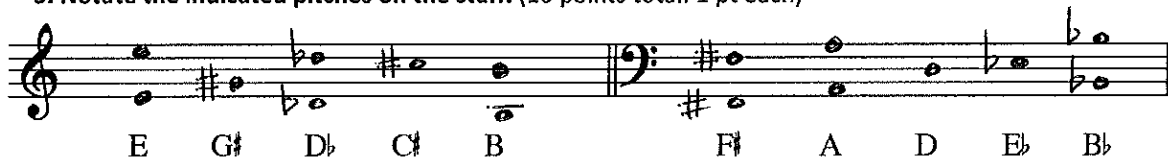
1. Each measure below is incomplete. Add one rest (only one!) to complete each measure. (12 points total: 3 pts/rest)



2. Provide the best time signature for each measure. In some cases, more than one answer may be possible. (12 points total: 2 pts each)



3. Notate the indicated pitches on the staff. (10 points total: 1 pt each)



only 1 is necessary - not the octave away

4. Draw the clef of your choice; then notate the specified ascending scale. Place accidentals in front of each note head, as needed. A key signatures will not suffice. (10 points total: 5 pts/scale. No partial credit.)



5. Using the clef of your choice, notate the specified key signatures. (12 points total: 3 pts each)



accidentals clearly on a line or in space

[only in one clef]

only required in one clef

6. Using the clef of your choice, notate the specified interval below the given note. (8 points total: 2 pts each)

Major 2nd Perfect 5th Perfect 4th Major 3rd

7. Using the clef of your choice, notate the specified interval above the given note. (8 points total: 2 pts each)

minor 2nd minor 3rd Perfect 5th Major 6th

8. Reading the clef of your choice, analyze the interval between the first and second notes in each measure. The same interval appears in both clefs. Provide both the numeric size and the quality of the interval. (20 points; 2 pts each)

9. Analyze the key for each musical excerpt below. Write your answer in the box in the left-hand column. (8 points total: 4 pts each)

B ^b maj.	
b min	