

# CPCE Results Summary 2016-2019

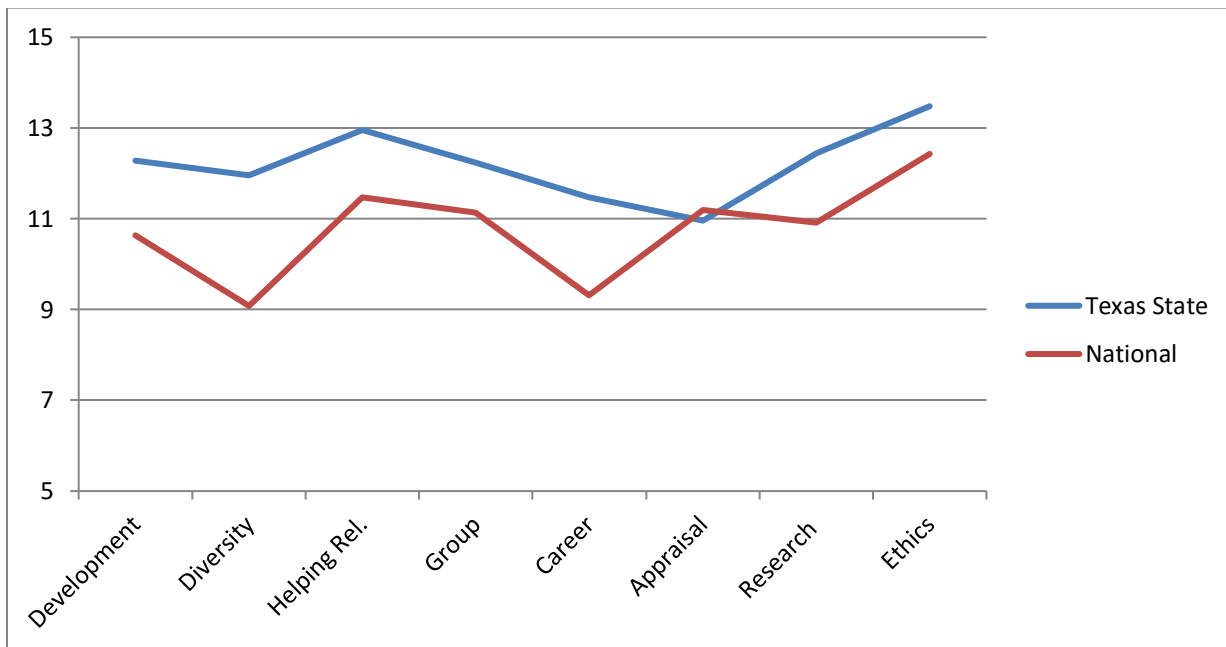
## Introduction

Students in the Professional Counseling Program at Texas State University are required to take the CPCE prior to beginning Clinical Practicum and are allowed three attempts to pass. In the data below, results are provided based on the number of attempts, not students. Thus, 50 attempts in a year could represent a lower number of students if some students had to retake the exam.

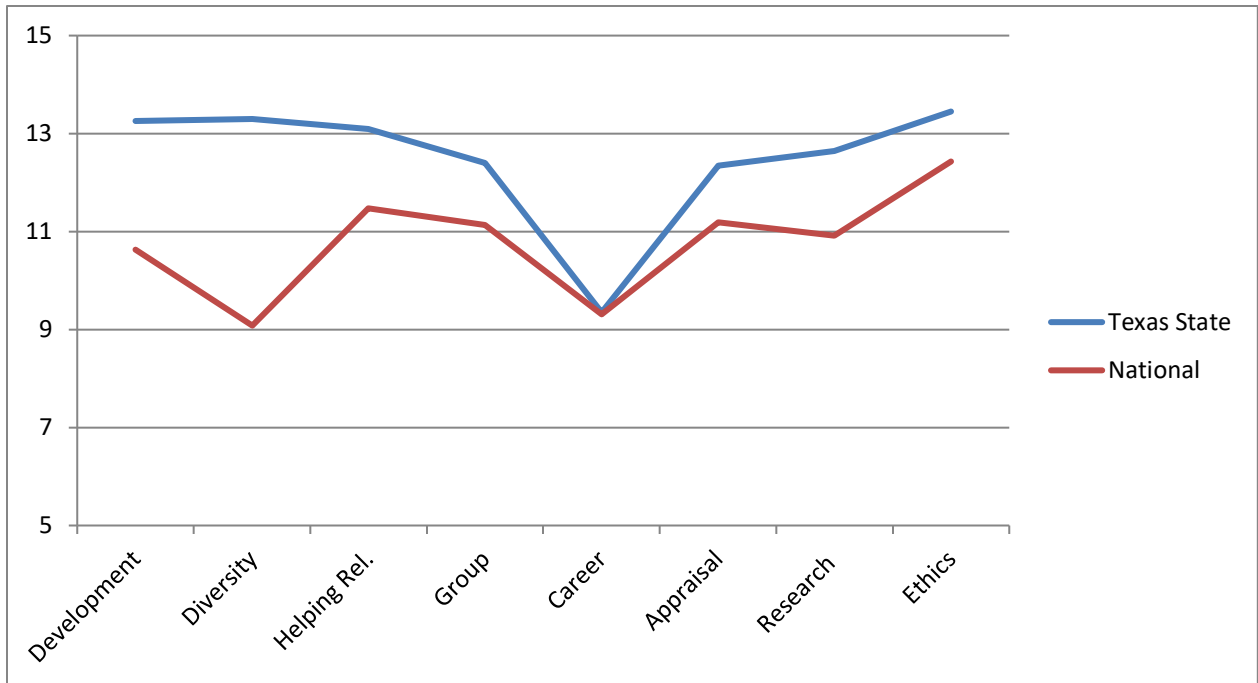
### 2016 CPCE Results Summary:

For the three administrations, Texas State University had 62 exam attempts with 52 passes. The mean scores for Texas State students were better than the national sample (universities that use the test as an exit exam) on almost every subscale covered on the exam.

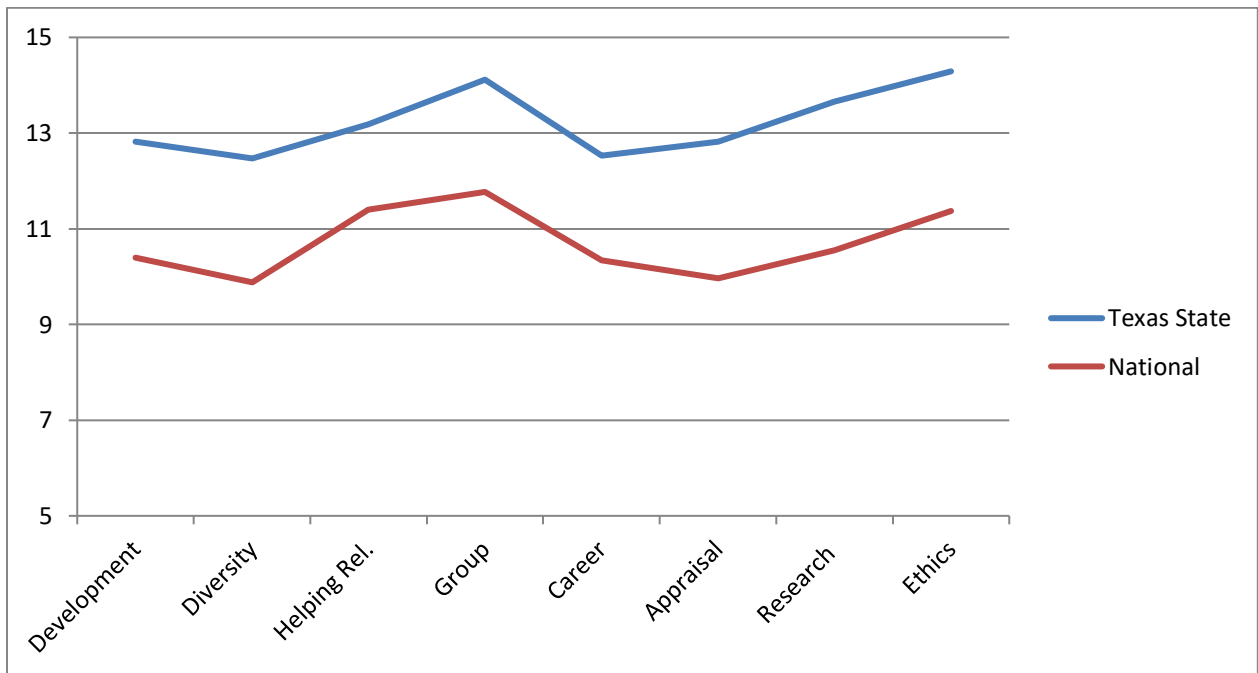
### Spring 2016 CPCE Results



### Summer 2016 CPCE Results



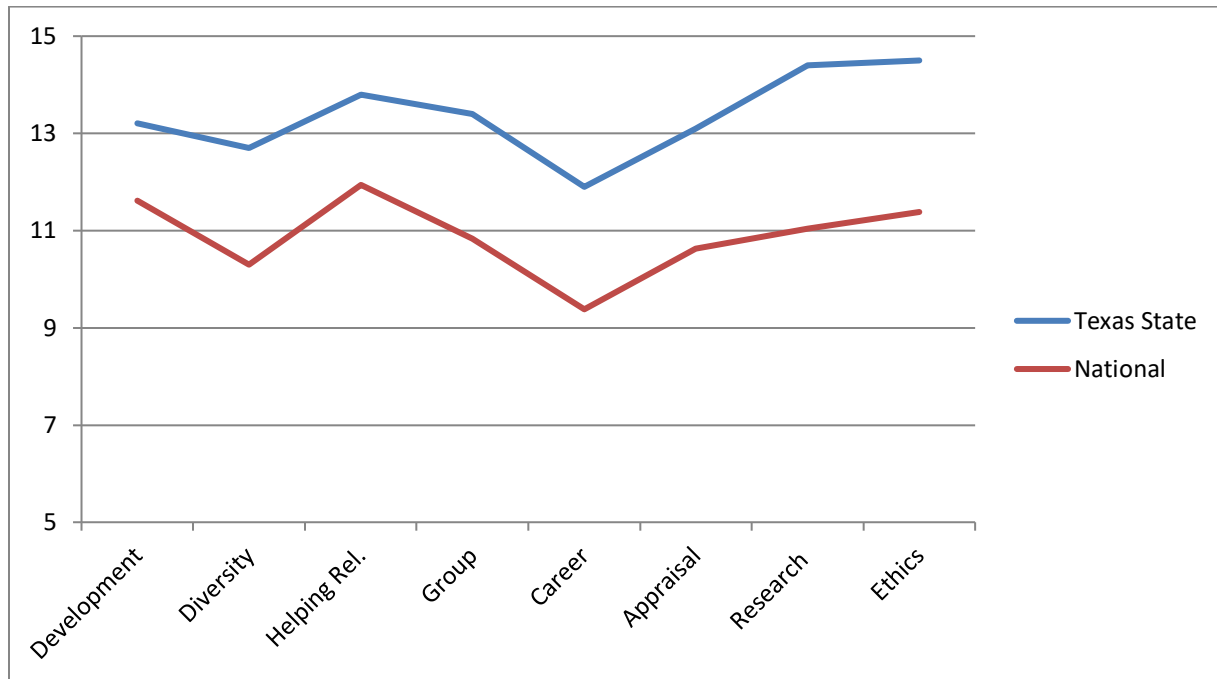
### Fall 2016 CPCE Results



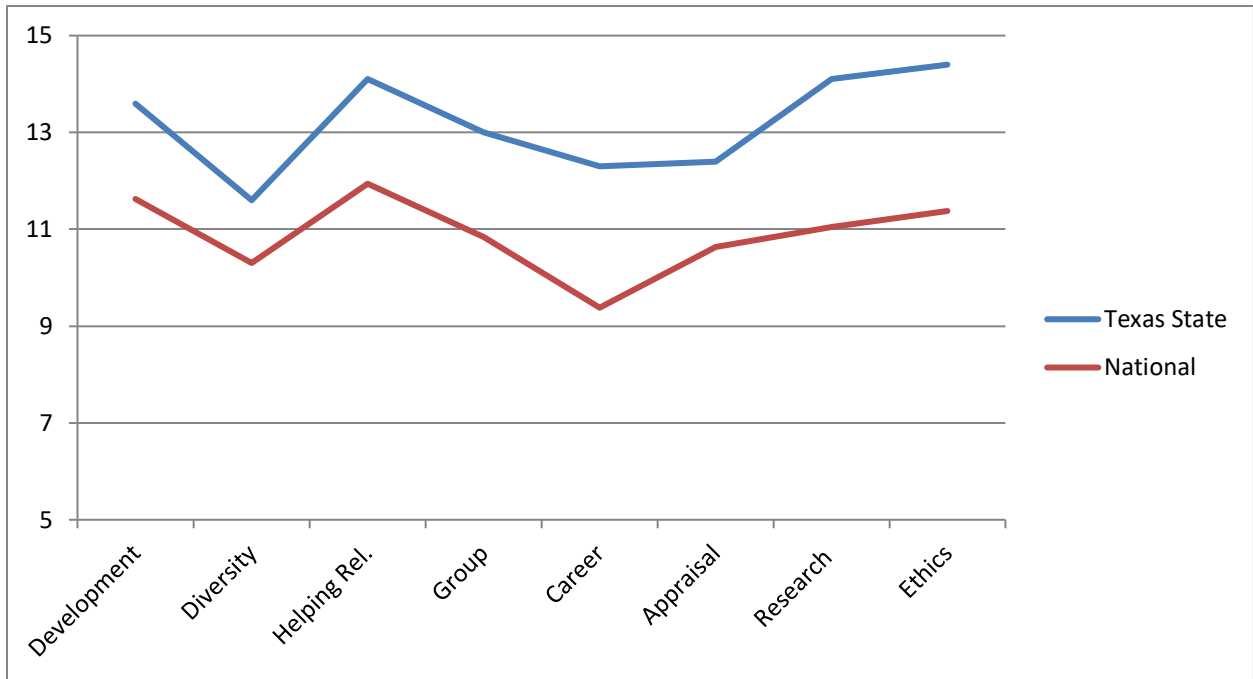
## 2017 CPCE Results Summary:

For the three administrations, Texas State University had 54 exam attempts with 47 passes. The mean scores for Texas State students were better than the national sample (universities that use the test as an exit exam) on EVERY subscale covered on the exam.

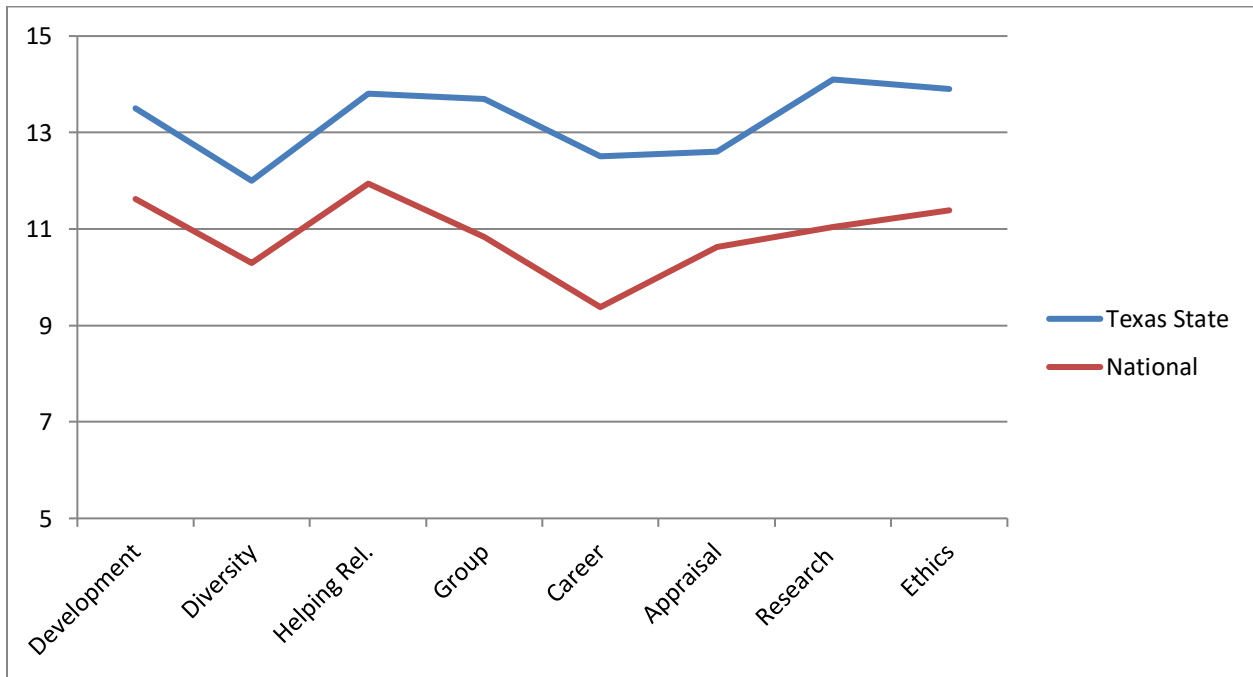
## Spring 2017 CPCE Results



### Summer 2017 CPCE Results



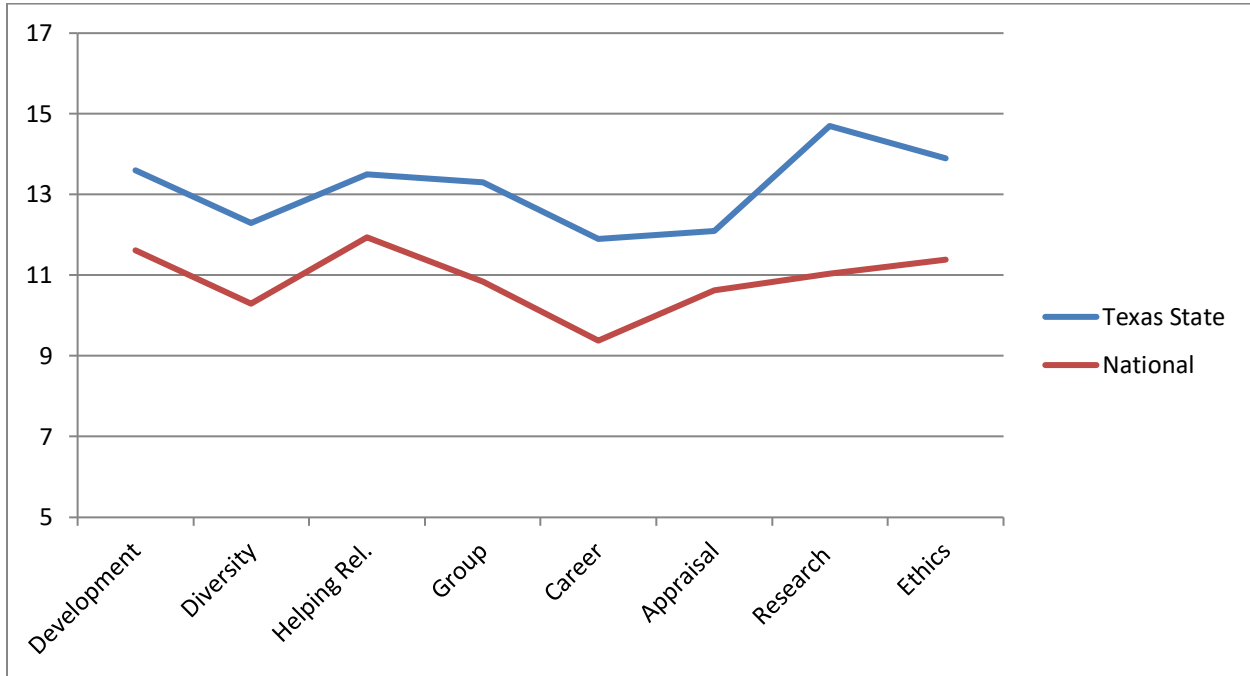
### Fall 2017 CPCE Results



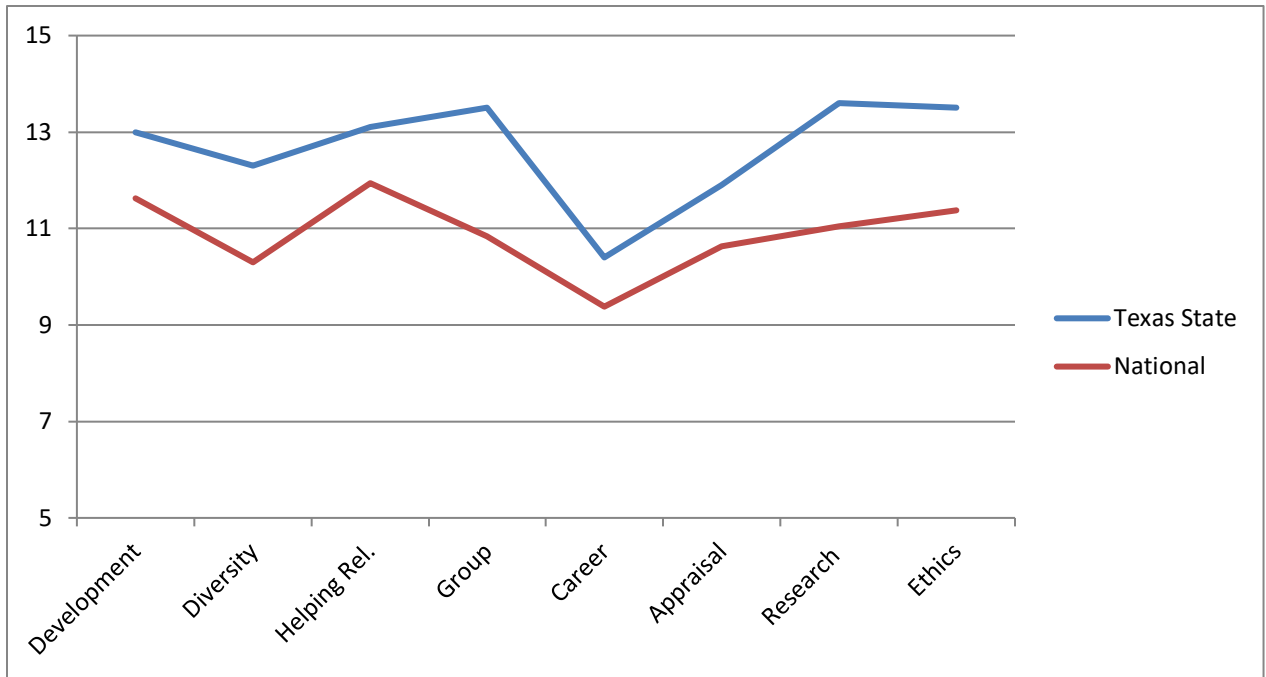
### 2018 CPCE Results Summary:

For the three administrations, Texas State University had 59 exam attempts with 48 passes. The mean scores for Texas State students were better than the national sample (universities that use the test as an exit exam) on EVERY subscale covered on the exam.

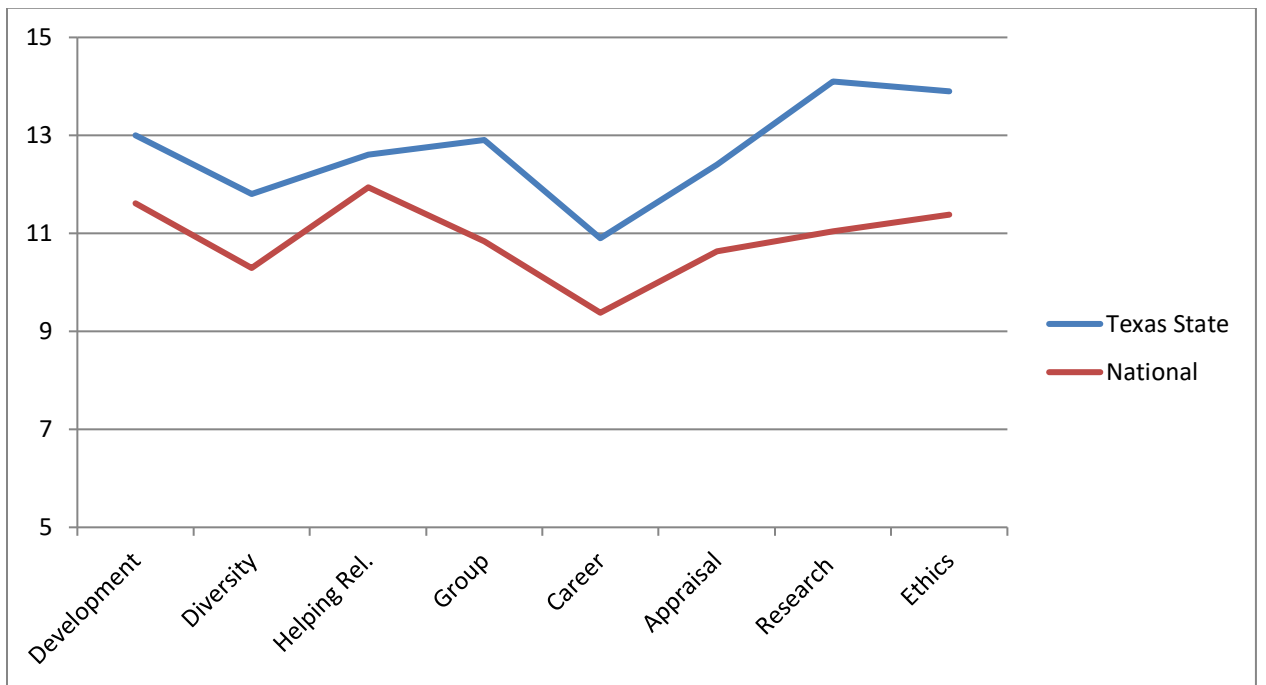
### Spring 2018 CPCE Results



### Summer 2018 CPCE Results



### Fall 2018 CPCE Results

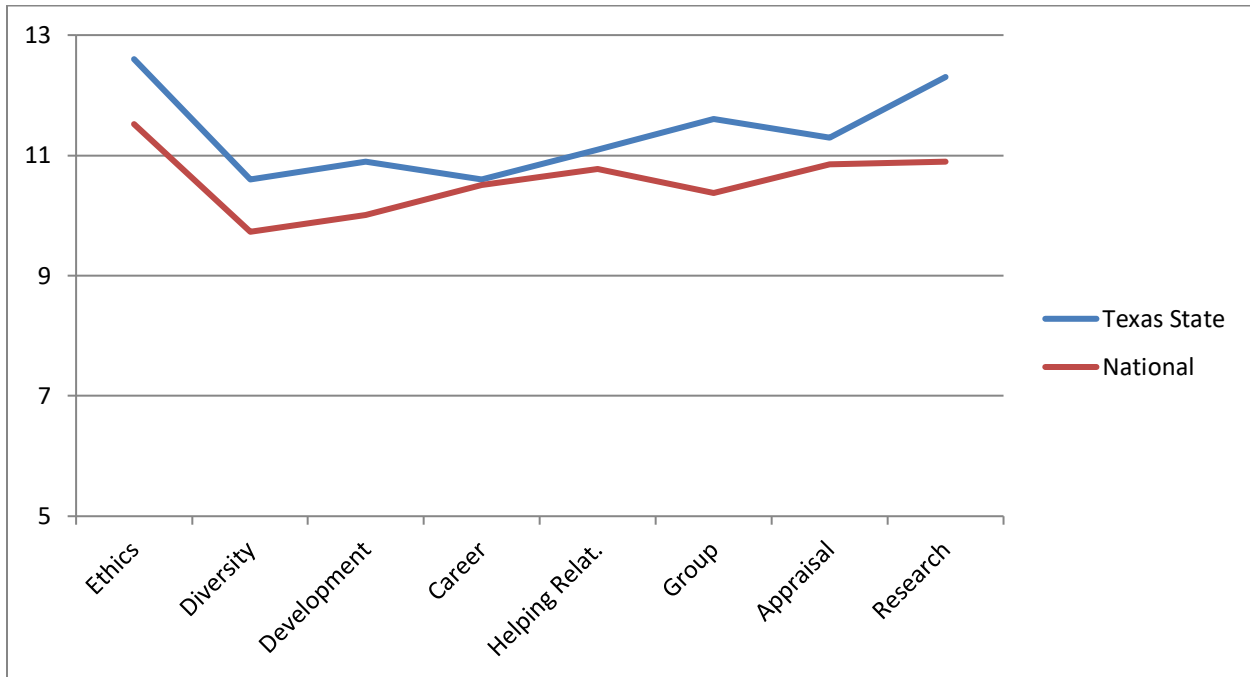


### 2019 CPCE Results Summary:

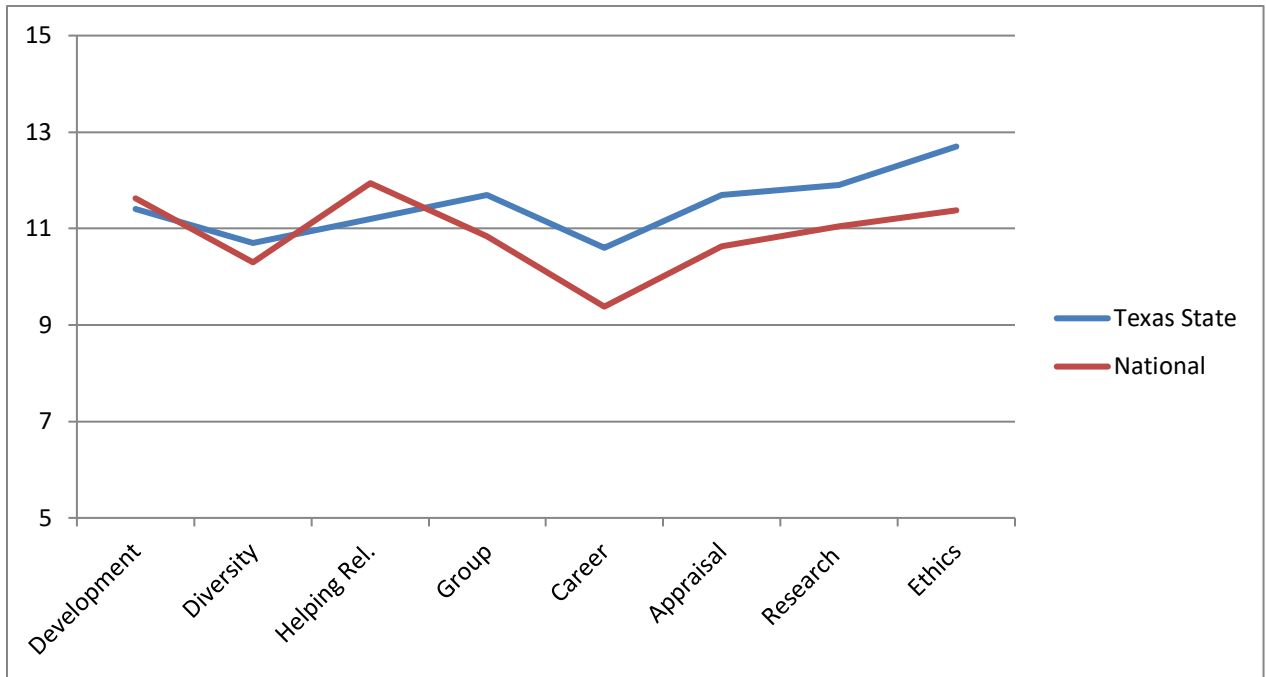
For the three administrations, Texas State University had 72 exam attempts with 49 passes. The mean scores for Texas State students were better than the national sample (universities that use the test as an exit exam) on most subscales covered on the exam. *Note:* In Spring 2019, CCE changed the order in which subscales are presented to align with CACREP standards.

*Technical difficulties during two Spring 2019 exam administrations resulted in a lack of confidence in test results. Students who failed during those administrations were given an option to re-test without penalty. All scores are included in the results below.*

### Spring 2019 CPCE Results



### Summer 2019 CPCE Results



### Fall 2019 CPCE Results

