

This is a practice version of the Theory Entrance Exam that all first-year music majors take at 8 am on the first day of classes. Print it out and complete in pencil. Allow no more than 45 minutes to finish both pages. Then compare to the answer key. Students who score 70 above enroll in Aural & Theory I (MU 1210-1211).

### Music Theory PRACTICE ENTRANCE Test B (to enroll in Theory 1 & Aural 1)

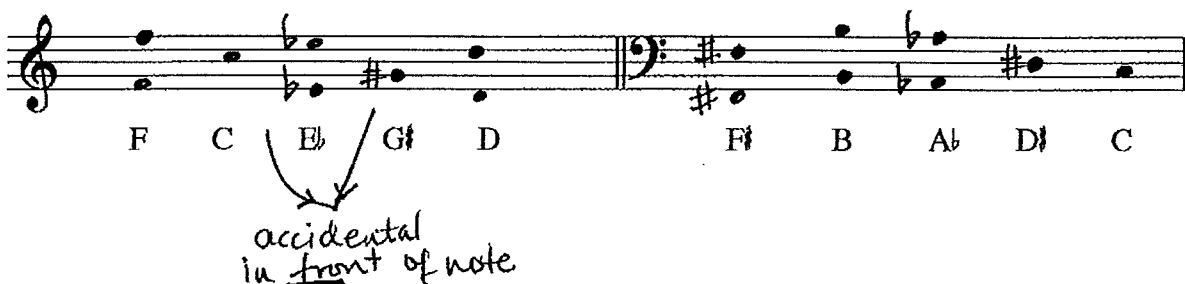
1. Each measure below is incomplete. Add one rest to complete each measure. (12 points total: 3 pts/rest)



2. Provide the best time signature for each measure. In some cases, more than one answer may be possible. (12 points total: 2 pts each)



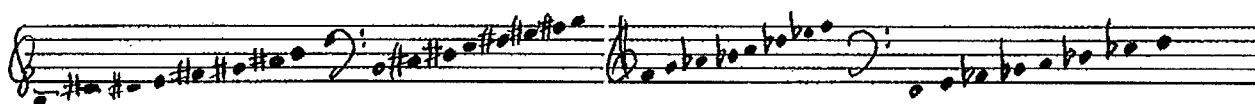
3. Notate the indicated pitches in any octave on the staff. Place accidentals in front of the note head. (10 points total: 1 pt each)



4. In the clef of your choice, notate the specified ascending scales using accidentals, not key signatures. (10 points total: 5 pts/scale. No partial credit.)

B Major

f natural (pure) minor



5. In the clef of your choice, notate the specified key signatures. (12 points total: 3 pts each)



A-flat Major

c minor

f# minor

E Major

required in one clef only -  
# b center must be on correct line/space

6. In the clef of your choice, notate the specified interval below the given note. (8 points total: 2 pts each)

*only one clef*

Major 2<sup>nd</sup>      Perfect 5<sup>th</sup>      Perfect 4<sup>th</sup>      Major 3<sup>rd</sup>

*accidentals and notes on same line/spc*

7. In the clef of your choice, notate the specified interval above the given note. (8 points total: 2 pts each)

minor 2<sup>nd</sup>      minor 3<sup>rd</sup>      Perfect 5<sup>th</sup>      Major 6<sup>th</sup>

8. In each measure below, the interval notated in the treble clef is the same as that notated in the bass clef. Reading the clef of your choice, analyze each interval. Provide both the numeric size and the quality of the interval. (20 points; 2 pts each)

*on Aug 4*

9. Analyze the key for each musical excerpt below. (8 points total: 4 pts each)

<p><i>E<sup>b</sup></i> <i>Major</i></p>	
<p><i>g</i> <i>minor</i></p>	